

Clinical trials in the Hunter New England

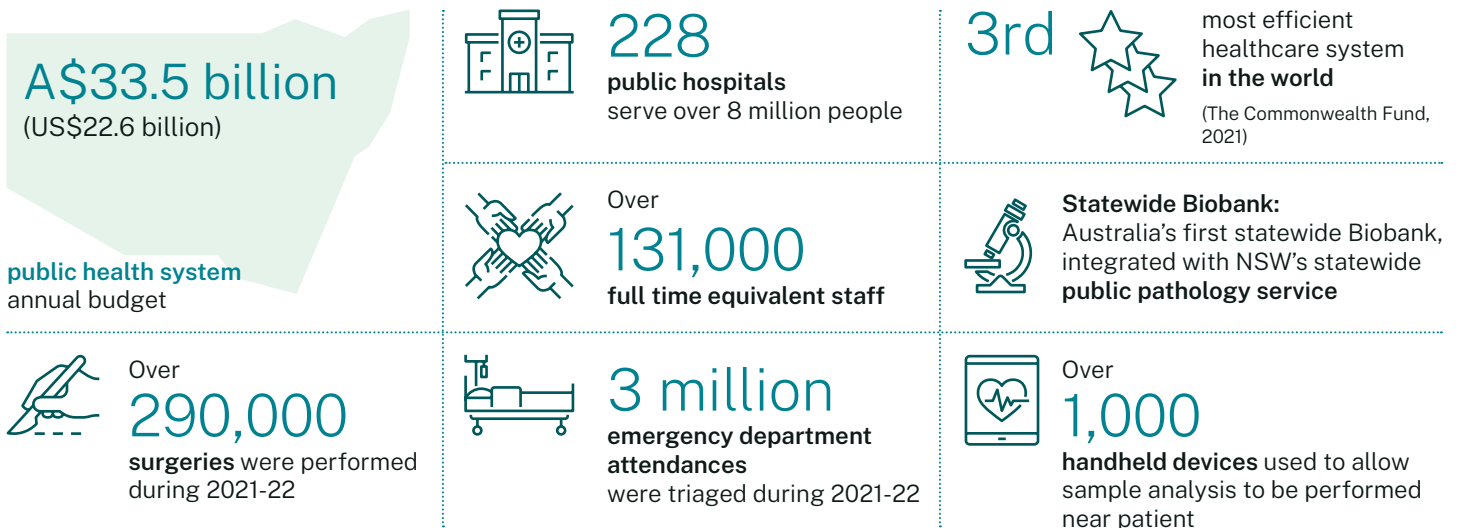


Leverage NSW's competitive advantages, including a first-class health system and regulatory environment, population diversity, cost efficiency, R&D tax incentives and access to Asia.

Why NSW?

A world-class, integrated health system

NSW has Australia's largest and best-performing public healthcare system and a globally significant research and development ecosystem with strong government backing.

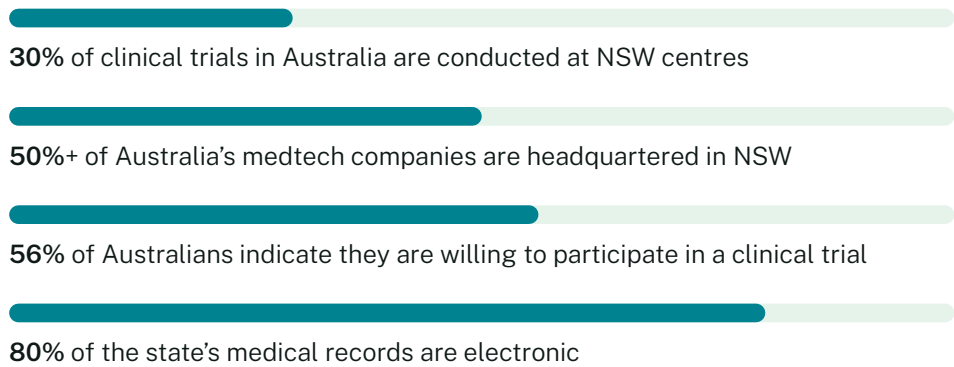


¹ Source: Medtech and Pharma Growth Centre: Australia's Clinical Trails Sector (2021)

NSW is Australia's largest market and population for clinical trials

With the largest economy in Australia (A\$600 billion), NSW is home to one-third of the Australian population (home to 8 million, more than Singapore and Hong Kong).

NSW has a primarily English-speaking, ethnically diverse population, with 17.9% of the NSW demographic being born in non-English-speaking countries, predominantly Asia.



NSW delivers clinical trial approvals quickly

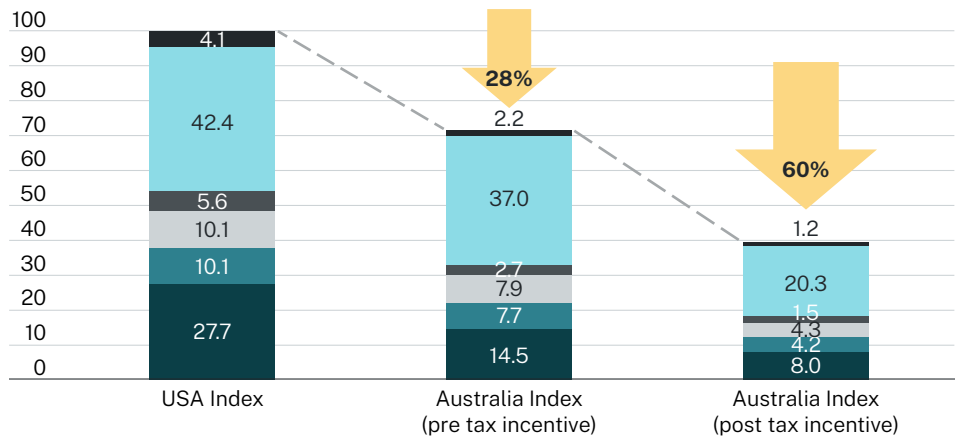
Clinical trials can access the entire NSW public health system and patient population with a single ethics application.



NSW is cost competitive

Trials in NSW are 28% less expensive than in the US, increasing up to 60% less with federal R&D tax incentives.

Cost comparison for a standardised early-stage clinical trial study conducted in Australia and the United States




Currency conversion rate: AUD1 = USD0.9

Source: Cost comparison for Phase 1 clinical trial in the US and Australia. Novotech cost comparison case study 2016

Why Hunter New England

 **942,374**
population

 **242**
distinct ancestries reported

 **42%**
of population reporting more than one ancestry

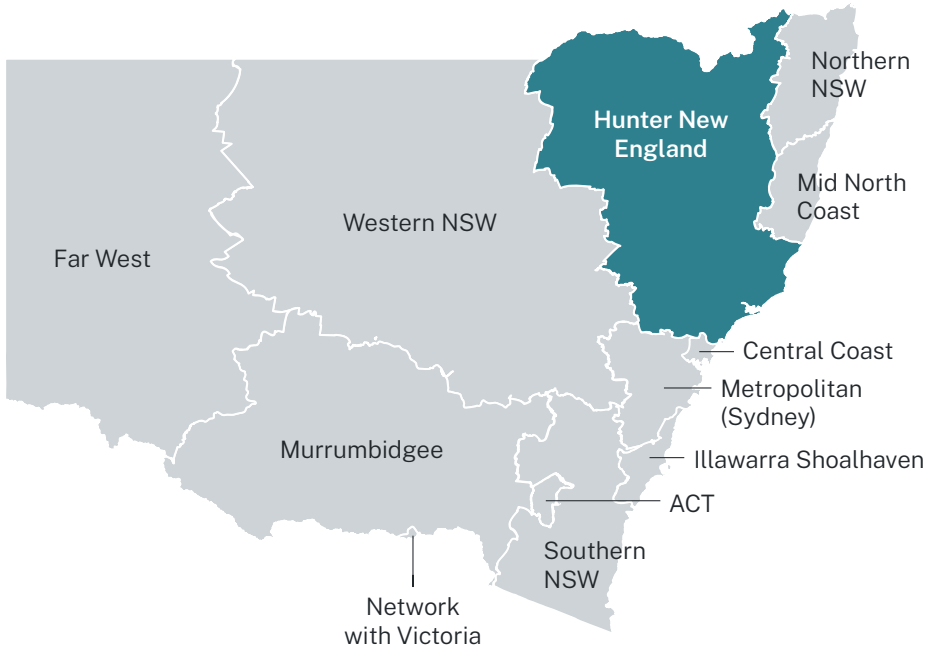
The Hunter New England region covers a large area of urban and regional New South Wales (roughly equivalent to the size of England) and serves approximately 1 million people from diverse backgrounds, including:

- 72,000 Aboriginal and Torres Strait Islander people
- 465,000 people living in regional and rural centres
- nearly 170,000 people born overseas.

The region is currently serviced by:

- one major metropolitan hospital (John Hunter Hospital, Newcastle)
- 314 general practices
- mix of several large and small regional centres supporting rural and remote communities.

Hunter New England Local Health District



-
- 1** tertiary referral hospital
 - 4** rural referral hospitals
 - 12** district hospitals
 - 8** community hospitals
 - 60+** community health services
 - 7** inpatient mental health facilities plus community mental health services
 - 3** residential aged care services



World-class **university and research institutes**, including Hunter Medical Research Institute, the University of Newcastle and the Hunter's National Centre of Excellence for Health and Education



NSW Government has committed **\$835 million** in establishing the John Hunter Health and Innovation Precinct



Health Care and Social Assistance is the largest sector by employment in the region, comprising approximately **15.5%** of the total workforce



Highly collaborative medical technology and pharmaceutical production sector



The 1st District Health Board in NSW to implement the Single Patient Digital Record system



University of Newcastle is top 200 globally and top 8 in Australia for research and **No.1 for industry collaboration**



Excellent connectivity to major markets via the Hunter Expressway, Pacific Highway, the Sydney-Newcastle railway, Port of Newcastle and Newcastle Airport

Hunter region health workforce

The Hunter has the largest health, manufacturing, and tech workforce in regional Australia.

The enviable lifestyle the Region offers also makes it a popular sea-change option for Australian professionals looking to move out of metropolitan areas, particularly Sydney.



69,106

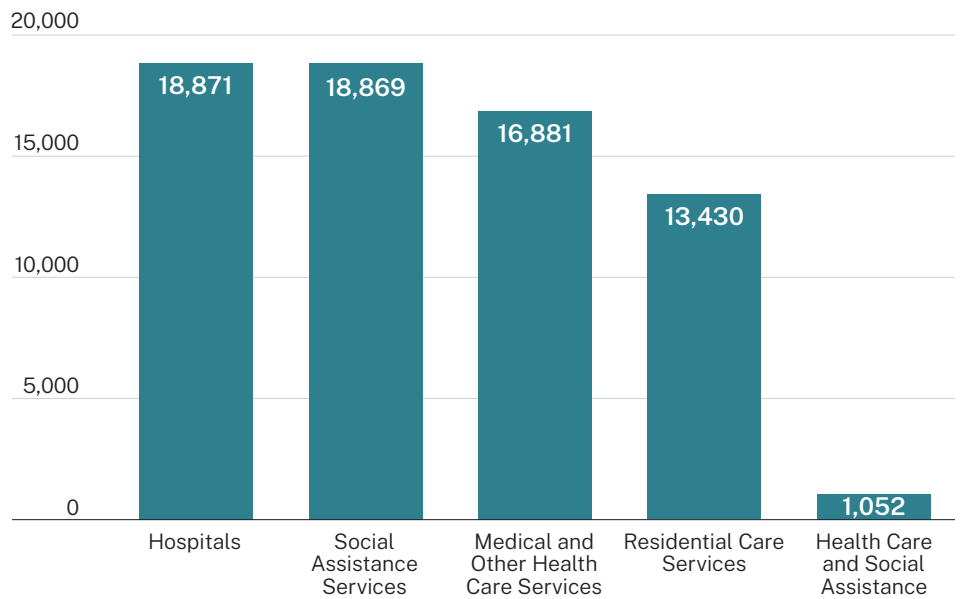
health sector employees



28,360

manufacturing sector employees

Hunter health employment by sub-industry

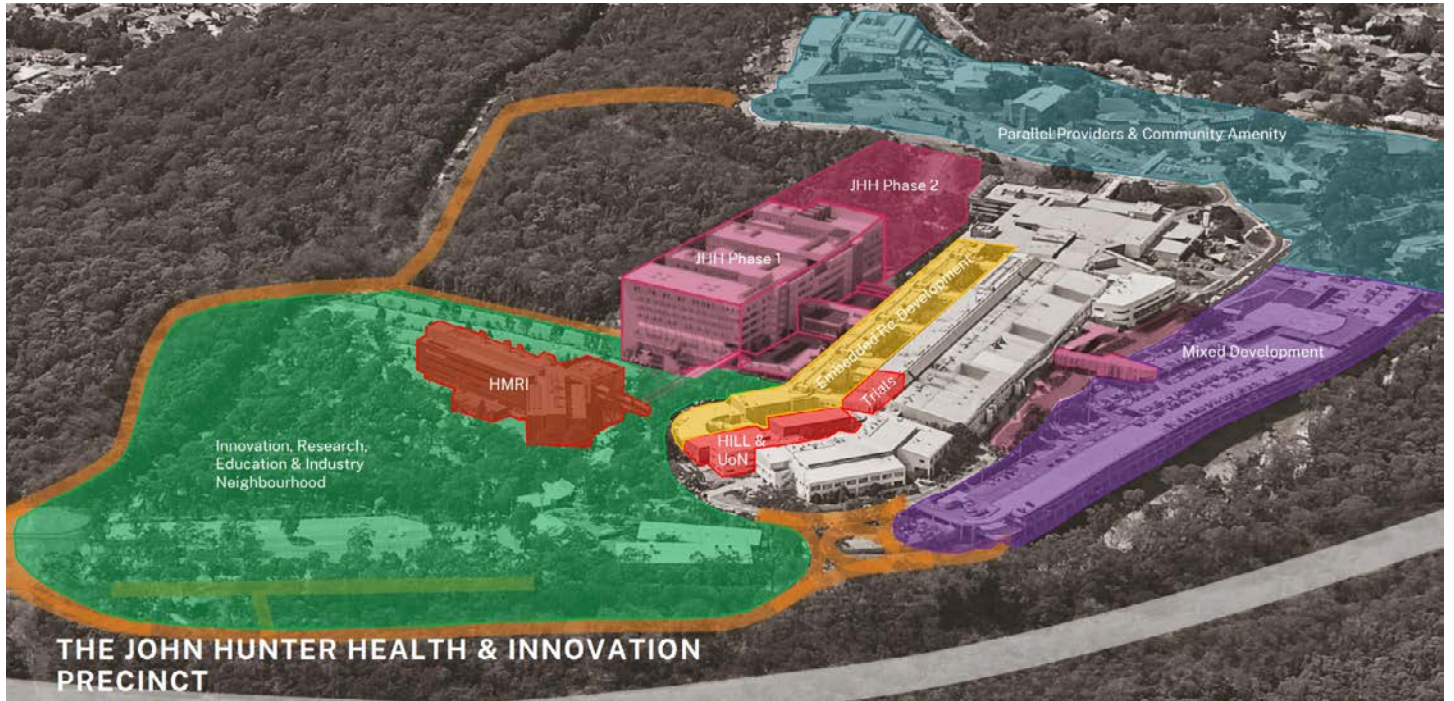


Source: ABS 2021



Integrated health, research and education ecosystem

John Hunter Health Innovation Precinct



Access a growing ecosystem

The John Hunter Health and Innovation Precinct project will deliver an innovative and integrated precinct with industry-leading facilities. The project will work in collaboration with health, education and research partners to meet the current and future needs of the Greater Newcastle, Hunter New England and Northern NSW regions. The project is scheduled for completion in 2026 and will provide a location for industry growth and collaboration. The NSW Government has committed \$835 million to redevelop the John Hunter and John Hunter Children's Hospital.

Access to property

Early phase clinical trial unit (2025)



10,000sqm

embedded space to research and collaborate



25ha

living lab land release



Medihotel

and town centre development



Precincts

Complementary health and wellbeing precincts

Hunter Medical Research Institute



1,700+

researchers, staff and
affiliate community



19

research programs
investigating the most
critical health problems



20,000+

community supporters

Powering 25 years of medical breakthroughs

Hunter Medical Research Institute is the result of a successful 25-year strong partnership between The University of Newcastle, the Hunter New England Local Health District, and the community.

HMRI is committed to transforming the health and wellbeing of individuals and communities through groundbreaking research, collaboration, and the practical application of scientific discoveries in real-world healthcare settings.

HMRI is the only comprehensive medical research institute of its kind based in regional Australia – the geographic footprint of HMRI and our partners is the largest in NSW.

HMRI has 19 research programs that study a wide range of health issues relevant to our communities:

- active living and learning
- asthma and breathing
- brain neuromodulation
- cancer detection and therapy
- drug repurposing and medicines
- equity in health and wellbeing
- food and nutrition
- healthcare transformation
- healthy minds
- heart and stroke
- immune health
- infection
- infertility and reproduction
- injury and trauma
- mothers and babies
- population health
- precision medicine
- surgical and perioperative care
- women's health.

Delivering end-to-end clinical trial solutions

Clinical trial sites: work within purpose-built sites across our region ready and eager to run clinical trials for their community.

Diverse cohort groups: access our diverse population including metro, regional, rural and remote areas of HMRI's footprint.

Sponsor and ARO capabilities: access governance structures and systems built for clinical trial success.

Accelerating knowledge: leverage expertise in data sciences, clinical trial coordination, and health economics all in the HMRI ecosystem.

The University of Newcastle



Top 200
university in the world



95%
of research is 'at' or 'above
world standard'



#1
university in the world for partnering
for a more sustainable future
university in Australia for industry
collaboration more sustainable future



Pioneer
Joint medical program with University
of New England pioneer of problem-
based learning in the medical
education

Leading regional university. Unique regional capabilities.

The University of Newcastle has cutting-edge facilities that provide access to clinicians, academics and industry to undertake clinical trials, including:

- clinical trials and simulation clinics
- imaging, radiation and diagnostics
- onshore core biobanking laboratory facility used for multi-centre clinical trials
- Central Analytical Facilities provide access to 30 specialised multi-disciplinary scientific equipment (spectrometry, microscopy, cytometry)
- two Living Labs established in the Hunter and Central Coast to support greater health research and innovation in the region
- Bioresearch Building provides access to state-of-the-art animal research facility that keeps pace with emerging technologies, methodologies and research fields
- the University of Newcastle Research Associates (TUNRA) provides business services for hosted projects.

Clinical trials

The university is involved in over 430 clinical trials as principal sponsor with more than 43,000 clinical trial participants. There are currently more than 200 active trials².

World-leading experts in priority research areas, including:

- cancer
- immunology and infectious diseases
- cardiovascular and respiratory health and disease
- healthy living and nutrition
- neuroscience and mental health
- pharmaceutical sciences and clinical pharmacology
- indigenous health
- reproductive health
- epidemiology, population health and health service delivery
- rural and remote health
- critical care and trauma
- integrated care.

² Australian New Zealand Clinical Trials Registry (ANZCTR)

Regional Economic Development

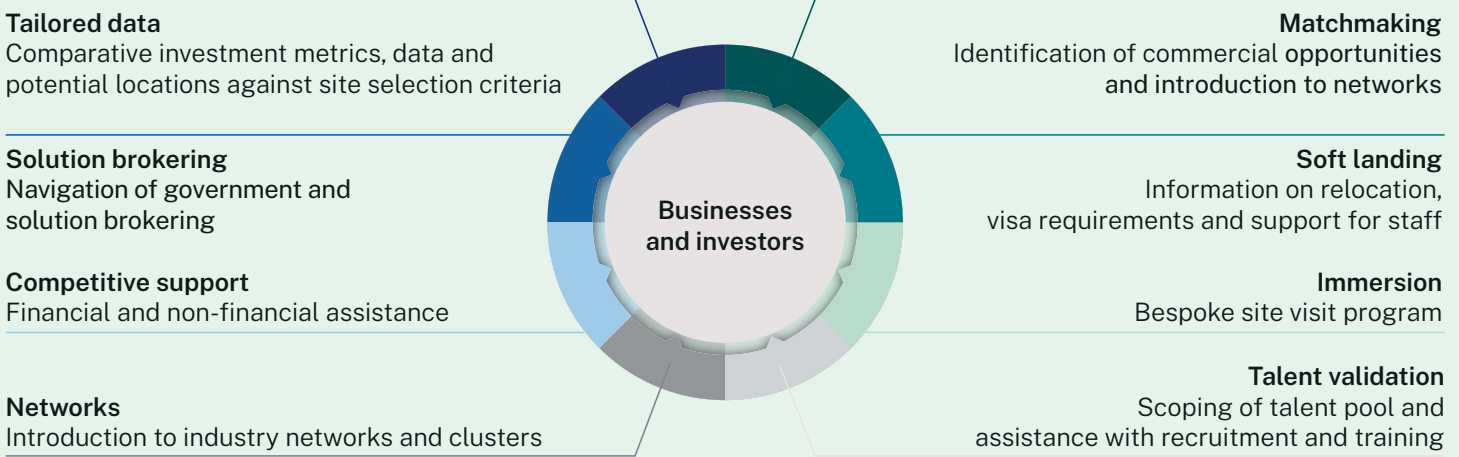
Dedicated team to further your business

As Australia's only investment promotion agency dedicated entirely to regional areas, Regional Economic Development combines deep local knowledge and connections to deliver exciting investment opportunities across New South Wales.

Working collaboratively with our partners in local, state and federal government, as well as the business, training and research ecosystem, we provide all the support you need to be successful in Australia's most dynamic state.

Our team live in the regional communities we represent and intimately understand the investment opportunities available.

We know the intricacies of doing business in regional NSW, and one of our expert advisors can help you explore the potential of doing business in Australia's most exciting and innovative investment destination.



→ @ info@investregional.nsw.gov.au

≡ investregional.nsw.gov.au

in @Invest-Regional-NSW

Disclaimer: The information contained in this publication is based on knowledge and understanding at the time of writing (April 2024) and may not be accurate, current or complete. The State of New South Wales (including the Department of Primary Industries and Regional Development), the author and the publisher take no responsibility, and will accept no liability, for the accuracy, currency, reliability or correctness of any information included in the document (including material provided by third parties). Readers should make their own inquiries and rely on their own advice when making decisions relating to material contained in this publication.

Information supplied in company profiles and/or internet links is not the responsibility of the State of New South Wales or its employees. Issues with accuracy or validity of the information supplied should be directed to the appropriate company. Users should be aware that the contents of this information package are likely to change over time. Interactions with companies listed in this information package are not the responsibility of the State of New South Wales or its employees.